



DECEMBER 2023

4-H Family News

Washtenaw County



Happy Holidays to our 4-H Families and Volunteers!

As the year comes to a close, we would like to thank our 4-H families and volunteers for their continued contribution to the Washtenaw County 4-H program.

- Thank you to all the parents who helped youth to participate in our 4-H programs.
- Thank you to all the 4-H volunteers who dedicated their time and energy to our programs.
- Thank you for all the 4-H'ers who worked hard this year to learn and grow as they completed their projects.

We hope you can spend time with family and friends this holiday season and we look forward to seeing you in the New Year!

Sincerely,
Washtenaw County 4-H Staff: Amy Harris & Jenny Speyer

UPCOMING MEETINGS & EVENTS:

Livestock and Dairy Committee Meeting
December 14th at 7 pm at the MSU Extension Office

MSU Extension Office Closed for Holiday Break
December 20th – January 2nd

Advisory Council Meeting
January 11th at 7 pm at the MSU Extension Office

Paint Prep Work Bee
January 17th from 5-7 pm at the Washtenaw Farm Council Grounds

Horse Board and Association Meeting
January 23rd at 6:30 and 7 pm at the MSU Extension Office

Small Animal Committee
January 25th at 6 pm at the MSU Extension Office (**New Date!**)

CONTACT US

Amy Harris
4-H Program Coordinator
harr1976@msu.edu

Jenny Speyer
4-H Program Instructor
speyerje@msu.edu

705 N. Zeeb Rd.,
P.O. Box 8645
Ann Arbor, Michigan
48107

PHONE & EMAIL:

734-997-1678

msue.washtenaw@county.msu.edu

WEBSITE:

<https://www.canr.msu.edu/washtenaw/>

MSU is an affirmative-action, equal-opportunity employer, committed to achieving excellence through a diverse workforce and inclusive culture that encourages all people to reach their full potential. Michigan State University Extension programs and materials are open to all without regard to race, color, national origin, gender, gender identity, religion, age, height, weight, disability, political beliefs, sexual orientation, marital status, family status or veteran status. Issued in furtherance of MSU Extension work, acts of May 8 and June 30, 1914, in cooperation with the U.S. Department of Agriculture. Quentin Tyler, Director, MSU Extension, East Lansing, MI 48824. This information is for educational purposes only. Reference to commercial products or trade names does not imply endorsement by MSU Extension or bias against those not mentioned.



COUNTY 4-H NEWS

Dairy Quiz Bowl Meetings Starting on January 15th



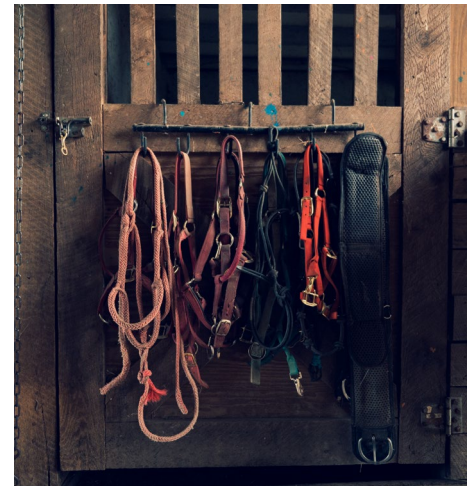
Do you know a 4-H'er interested in dairy science, dairy production, or veterinary science? Encourage them to join the Dairy Quiz Bowl Team! The group meets the 3rd Monday of each month January through July. They discuss dairy science and dairy production topics. The material is also very relevant to youth interested in vet science. Meetings are at Horning Farms in Manchester.

The first meeting is Monday, January 15th at 6:30 pm. They will have pizza to start our kick-off meeting for the year. To RSVP (to help plan for food) or if you have any questions, please contact Katelyn Packard at klhorning14@gmail.com.

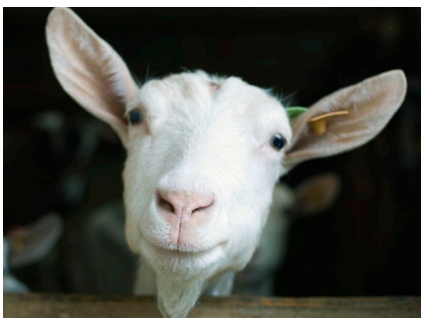
Save the Date: Washtenaw County 4-H Horse Association Tack Sale on Feb. 11th

Mark your calendars for the annual Washtenaw County 4-H Horse Association Tack Sale on February 11th from 10 am – 2 pm at the Washtenaw Farm Council Grounds at 5055 Ann Arbor-Saline Rd, Ann Arbor, MI in Buildings B and C. The Tack Sale will feature new and used horse tack, riding apparel, and a silent auction. Set up will begin at 8 am. Reservations and payment required by February 1, 2024. First table/space is \$25. Additional table/space \$15 each. 4-H members and clubs first table/space is \$20. Additional table/space \$10 each. There is an additional \$10 per table/space late fee if after Feb 1, 2024. All proceeds benefit the Washtenaw County 4-H Horse Program. If you would like to reserve a table, please check out the reservation flyer for more information.

For further information please contact: harr1976@msu.edu



Small Animal Committee Meeting Date Changes



The Small Animal Committee has voted to change their meeting dates to the fourth Thursday of odd months in 2024. The meeting will still start at 6 pm. This means their next meetings will be:

- Thursday, January 25th Thursday March 28th
- Thursday, May 23rd Thursday, September 26th



COUNTY 4-H NEWS

Interested in Joining our Washtenaw County 4-H Hippology and/or Horse Judging Teams?

Washtenaw County 4-H is looking for registered 4-H members (ages 5-19) to join our Hippology Team and/or Horse Judging Team! Both events at MSU don't have specific dates yet but Hippology is on a Saturday in mid-March and Horse Judging is on a Saturday in mid-April. Hippology is the study of all horse-related knowledge, including judging, anatomy, breeds, colors, care, equipment, tack, health and welfare, and riding disciplines. Horse Judging is your opportunity to become the judge and place horses based on conformation (halter) and performance (riding). Both teams compete against other Michigan counties and senior divisions can qualify for the national contest. Cost is roughly \$23 per member, per team. Optional study sessions will start in early February.



If you are interested in participating on both/either teams, please contact Angela Oakman by January 31, 2024 - email: angela_oakman@yahoo.com cell: 734-395-9714 (call or text). The Horse Judging Workshop and Mini Contest (event at MSU in early February) is highly recommend for anyone participating on the Horse Judging team.

More information (from the 2023 contest): https://www.canr.msu.edu/horses_ponies/registration-information?fbclid=IwAR1hMipUIYxBkwEQFDAXf1ce59lsPG6LwvGvFjZkgypyC0NsCnGiqc-CF2w

MSU Extension Winter Break Office Closures



The Washtenaw County MSU Extension Office will be closed from December 20th through January 2nd for Winter Break. We also will not be able to do any transactions after the 15th of December. This means we cannot sell pesticide applicator manuals and soil test kits after the 15th. If you have something you need to drop off or pick up at the office, please make sure to do so before this break. Our office hours are Monday, Wednesday, and Friday from 8 am to 3 pm and Tuesday and Thursday from 9 am to 4 pm. We look forward to seeing you at the office in the New Year!



COUNTY 4-H NEWS

Washtenaw Farm Council Grounds Work Bees in 2024



We are hosting a few work bees throughout the year to help Washtenaw Farm Council staff with the maintenance of the grounds. We are fortunate to have the use of these grounds for free at all our 4-H programs and now it's our turn to help clean it up. Our first work bee will take place on Wednesday, January 17th from 5-7 pm and have youth prepping areas in the barns to paint with tape. We do ask for only ages 13-19 years old at this event as it does require more skill. Sign ups are preferred but youth and families can drop in if they aren't sure they will be able to attend. Youth must be enrolled in 4-H online to attend.

Sign up now at: <https://www.signupgenius.com/go/10C084FA9A82BAAF4C43-46576725-painting>

Interested in Starting a Poultry Project Next Year?

Are you thinking about starting a Poultry project for next year's fair? Don't wait until spring! If you are looking to enter show or production birds at fair, you should be looking for your show stock, and if you are looking to enter market animals, take some time to research the care your animals will need this spring!

Poultry can be a great beginner livestock project and are perfect for families that cannot have large livestock but can have backyard chickens!



Living in a suburban or urban area? Check with your township to see if they permit backyard chicken flocks! Poultry are a great multipurpose livestock species, and can be used for egg production, meat production, companionship, and garden pest and weed management and more! Because of the variety of breeds available, there are birds that can fit well into almost any 4-H project. From fancy breeds such as Silkies and Old English Game Bantams, to egg production breeds like Rhode Island Reds and Plymouth Rocks, to meat production birds such as Cornish Cross, there are birds for anyone who is able to keep them! There are other poultry species, such as Ducks, Geese, Quail, or Turkeys that may be a great option for youth looking to expand their current program too!

- For a brief description of the current breeds and varieties recognized by the American Poultry Association, please see: <https://amerpoultryassn.com/accepted-breeds-varieties/>
- The American Poultry Association also has many great articles on raising, breeding, and showing poultry. For more information, please see: <https://amerpoultryassn.com/>
- Thinking of starting with chicks? MSU Extension has information on tips for bringing home baby chicks! https://www.canr.msu.edu/news/tips_for_bringing_baby_chicks_home
- Please reach out to Amy at harr1976@msu.edu or 734-222-3936 if you have additional questions.



COUNTY 4-H NEWS

Thank you for Volunteering at the 4-H Holiday Tree Sale!

We want to thank all of our 4-H'ers and 4-H volunteer who helped set up and run the 4-H Holiday Tree Sale this year. In particular, please join us in thanking 4-H volunteer and leader Jean Martin who helped pick up the trees and helped train the youth and families on how to sell them and get them ready for customers. We also want to thank all the families that purchased trees and wreaths and supported our 4-H program. These profits will provide 4-H senior scholarships and other Washtenaw 4-H programs like our 4-H Recognition Program.



Junior Livestock Paints Pumpkins for the 4-H Recognition Program & Represents 4-H at the Chelsea Hometown Holidays Parade

Junior Livestock did a great job decorating the 4-H Recognition Program again this year! One part of their decorations was painting pumpkins at Hilltop Greenhouse. 4-H'ers Keara Groves and Raiden Kipfmiller were the winners of their contest for the best pumpkin!



Junior Livestock also participated in the Chelsea Hometown Holidays Parade to represent Washtenaw County 4-H. They also have a Bake Sale scheduled for this Saturday December 9th from 10 am – 3 pm at Tractor Supply on Jackson Rd. Proceeds from the sale will be used to sponsor a foster child through the Foster Care Closet. All youth age 12-19 are welcome to join this group. We have a group email that is sent out to inform you of upcoming activities and events; if interested in joining the email chain, email a message to Kathy Grau, kgrau3437@aol.com



4-H Recognition Program Recap

Thank you for everyone who came out on Sunday, November 12th, to recognize our 4-H youth, volunteers, and community supporters. We had an amazing turn out of 185 people!! Winners, if you have not already, please take a moment to thank your club leader or volunteer who nominated you to be recognized! We also want to thank our 4-H Advisory Council and Service Club for sponsoring this event and Junior Livestock for decorating, setting up, and speaking at the program. Please congratulate the following youth, volunteers, and community supporters if you see them out in the community this month!

Congratulations to the following 4-H youth:

William Danforth "I Dare You" Award Winners:

- Tessa Avery, Stephanie Bushey, Leah Eddins, Julia Lorch

Washtenaw County 4-H Scholarship Winners:

- Luke Blumenauer, Leah Eddins, Heidi Fuchs, Emma Shankland, Paige Shankland

County Medal Award Winners:

- | | | | |
|---|--|--|--|
| <ul style="list-style-type: none"> • Beef: <ul style="list-style-type: none"> • Annalise Desbrough • Nathan Desbrough • David Prielipp • Katie Polzin • Emma Shankland • Citizenship: <ul style="list-style-type: none"> • Shepherd Thompson • Clothing & Textiles: <ul style="list-style-type: none"> • Lyla Naebeck • Community Service: <ul style="list-style-type: none"> • Audra Ambrozaitis • Lydia Avery • Westin Rogers • William Rogers | <ul style="list-style-type: none"> • Dairy: <ul style="list-style-type: none"> • Harper Jane Adkins • Raelyn Bristle • Jolene Line • Lizzie Pantolin • Dogs: <ul style="list-style-type: none"> • Amy Sweet • Entomology & Bees: <ul style="list-style-type: none"> • Amelia Long • Goats: <ul style="list-style-type: none"> • Shepherd Thompson • Horse: <ul style="list-style-type: none"> • Audra Ambrozaitis • Leah Eddins • Lucia Simeone | <ul style="list-style-type: none"> • Leadership: <ul style="list-style-type: none"> • Harper Jane Adkins • Raelyn Bristle • Raiden Kipfmiller • William Rogers • Photography: <ul style="list-style-type: none"> • Madelyn Ernst • Plant Science: <ul style="list-style-type: none"> • Lauren Harteg • Amelia Long • Poultry: <ul style="list-style-type: none"> • Lauren Harteg • Violet Olley • Sydnee Short | <ul style="list-style-type: none"> • Rabbits: <ul style="list-style-type: none"> • Violet Olley • Sydnee Short • Amy Sweet • Sheep: <ul style="list-style-type: none"> • Amanda Hieber • Valorie Hieber • Raiden Kipfmiller • Adyson Naebeck • Swine: <ul style="list-style-type: none"> • Annalise Desbrough • Visual Arts: <ul style="list-style-type: none"> • Amanda Hieber |
|---|--|--|--|





4-H Recognition Program Recap

Congratulations to the following 4-H Club Spirit Award Winners:

- Eva Adkins, Vytautas Ambrozaitis, Sophia Anderson, Audrey Bi, Caleb Benedict, Carson Benedict, Harlee Bristle, Martha Broesamle, Kendall Brooks, Katherine Buckley, Amaya Buter, Trace Buter, Corrina Cabrejos, Mason Czuj, Rachel Desbrough, Abigail DiMattia, Annamarie Dyer, Dylan Dyer, Thomas Dyer, Parker Early, Caiden Eddins, Lola Finkbeiner, Peniel Flores, Travis Ford, Brock Girbach, Mackley Griffis, Zara Griffiths, Amelia Harsh, Sam Harsh, Mackenzie Henes, Samantha Henes, Cassidy Hieber, Stewart Hieber, Felix Holland, Phoebe Holland, Colton Hovatter, Daniel Kennedy, Samuel Kennedy, Hartlyn Kipfmiller, Adler Line, Layla Line, Alice Long, Layla Majeski, Liam Majeski, William Marion, Rex McNutt, Richard McNutt, Anastacia Mouhajer, Lincoln Naebeck, Isabella Nazzaro, Dillon Neigebauer, Teagan Odum, Wilton Odum, Alfred Olley, Victoria Perez, Dallis Rasthabanh, Elena Reginaldo, Ben Rentschler, Chris Rentschler, Nathan Rentschler, Elliot Seeger, Emma Seeger, Emerson Theil, Noelle Thompson, Rock Thompson, Grace Weidmayer, Evan Weidmayer, Alora Wahl, Elijah Wahl, Anna Xu, Tobin Zuniga, and Maddie Zuniga

Congratulations to the following 4-H volunteers and community supporters

Leader of the Year 2023

- Jessica Kipfmiller

4-H Alumni of the Year 2023

- Leann McNutt

4-H Angel Award

- Annie Warner

Volunteer Years of Service:

- **1 Year of Service:**
 - Bekah Bushey, Jaclyn Crawford, Joanna Jamil, Susan Long, Kathy Pantolin, Julie Peale, Natalie Rentschler, Jeff Szpara, Kacie Szpara, Carrie Trinkle, Chad Trinkle
- **5 Years of Service:**
 - Karen Buchs, Danielle Doyle, Wendy Lackey-Cornelison, Becky Murillo, Katie Norder, Courtney Runchey, Sam Stokes
- **10 Years of Service:**
 - Erica Drake
- **15 Years of Service:**
 - Mandy Rogers
- **25 Years of Service:**
 - Amy Creteau & Rebecca Johnson



Meritorious Service (Friend of 4-H) Award Winners:

- Weidmayer Farms
- Ken & Denise Prielipp
- Chelsea Plank Flooring
- Milan Elevator





STATEWIDE CALENDAR OF EVENTS

Shop the Michigan 4-H store this holiday season



Buy your favorite Michigan 4-H apparel, drinkware, and essentials at the SHOP 4-H Online Store!

Offered in collaboration with National 4-H Council through Shop 4-H, the Michigan 4-H store offers Michigan 4-H branded apparel and other gifts. Visit the store online and find the perfect item for your favorite 4-H'er, volunteer, alumni, professional or fan! The shop is open to the public and a percentage of all proceeds will be donated to Michigan 4-H.

To order Michigan 4-H specific items, visit <https://bit.ly/30pdNJw>. The store will remain open beyond the holiday season to continue offering Michigan 4-H branded gear to the Michigan 4-H community.

December 2: Oakland County Tack & Craft Sale

Springfield Oaks Activity Center, Davisburg

Come shop for one of a kind unique holiday gifts! Admission to the sale is \$1. All are welcomed to attend.

www.canr.msu.edu/events/adulting10111-8-23

December 12: Wild Spartans – Casting for a Career in Coldwater Conservation

Online

Dive into the Great Lakes and rivers to explore their coldwater residents! Meet the Great Lakes Engagement Coordinator for Trout Unlimited, Jamie Vaughan. Learn about her field work and the education and career path she followed to get there.

www.canr.msu.edu/events/wild-spartans-series-2023-2024dec

MSU Extension Listening Session Series

Various locations

MSU Extension is holding a series of public listening sessions. Through these sessions, MSU Extension hopes to gather input on where the organization is, what they do well, and where there are opportunities for improvement. This feedback will be used to help shape MSU Extension's priorities and service for years to come. Everyone is welcome and encouraged to attend!

- **Dec. 11 - Marquette** - 4-6:30 p.m. - Northern Center, Northern Michigan University
- **Dec. 12 - Grayling** - 4-6:30 p.m. - Kirtland College Event Center
- **Dec. 13 - Frankenmuth** - 4:30-7 p.m. - Saginaw Valley Research and Extension Center
- **Dec. 14 - Muskegon** - 4-6:30 p.m. - Muskegon Community College
- **Dec. 18 - Kalamazoo** - 4-6:30 p.m. – Delta Hotels Kalamazoo Conference Center

Pre-registration is highly encouraged. Walk-in registrations may be limited due to facility capacity. Register now at events.anr.msu.edu/listeningseries.

Kettunen Center Inventory Closeout

Kettunen Center was the first 4-H volunteer and youth training center in the nation, owned and operated by the Michigan 4-H Foundation from 1961 to 2021. The center's remaining merchandise, such as sweatshirts, t-shirts, jackets, mugs and more, is now available for sale! We know the Kettunen Center meant so much to the 4-H community and this is an opportunity to purchase something by which to remember the center. Purchase yours today at <https://mi4hfdtn.org/shopkett/>.

KETTUNEN CENTER MERCHANDISE SALE

SHOP NOW





STATEWIDE 4-H NEWS

MSU Extension announces statewide public listening sessions

Adapted from: <https://www.canr.msu.edu/news/msu-extension-announces-statewide-public-listening-sessions-in-november-and-december>.

Whether it's supporting the dedicated professionals who drive the state's agriculture economy or empowering children to develop leadership skills, helping others is central to the mission of Michigan State University Extension, the community outreach arm of the university.

"Service is at the core of who we are," said Quentin Tyler, director of MSU Extension. "As we think strategically about our organization, we value input from those we serve most of all."

With that in mind, MSU Extension is holding a series of public listening sessions at various locations across the state as part of an ongoing strategic direction process. These sessions will begin in late November and continue through mid-December.

Through these sessions, the organization hopes to gather input from a diverse group of people to determine where MSU Extension is, what is working well and opportunities for improvement. This feedback will be used to help shape MSU Extension's priorities and service for years to come.

Each listening session will begin with a welcome from MSU Extension leadership and staff. Then, participants will be divided into two groups – external participants and partners will gather in one room, and MSU Extension faculty and staff will gather in another. In each of these rooms, participants will be invited to share their perspectives and insights through a series of facilitated activities. Questions will center on topics such as: emerging social, economic, and other trends that participants expect will impact them in the future; what participants know MSU Extension for; what participants believe MSU Extension does well, and what they think can be improved; and what participants envision a thriving MSU Extension would look like in the future. Common themes heard from participants will be identified and reflected to the entire group for each activity.

Everyone is welcome and encouraged to attend – youth, parents, community and statewide partners, all MSU Extension-affiliated faculty and staff, and curious community members. Translation and interpretation services, as well as other accommodations, may be available upon request.

Listening Session Locations and Dates:

- **Nov. 28** - Detroit - 1-3:30 p.m. - MSU Detroit Center
- **Nov. 28** - Troy - 6-8:30 p.m. - Troy Continuing Education Building
- **Nov. 29** - East Lansing - For public attendees only, 9-11:30 a.m. - Hannah Community Center
- **Nov. 29** - East Lansing - For MSU Affiliated Staff only, 1-3:30 p.m. - MSU Campus, Conservatory
- **Dec. 11** - Marquette - 4-6:30 p.m. - Northern Center, Northern Michigan University
- **Dec. 12 - Grayling** - 4-6:30 p.m. - Kirtland College Event Center
- **Dec. 13 - Frankenmuth** - 4:30-7 p.m. - Saginaw Valley Research and Extension Center
- **Dec. 14 - Muskegon** - 4-6:30 p.m. - Muskegon Community College
- **Dec. 18 - Kalamazoo** - 4-6:30 p.m. – Delta Hotels Kalamazoo Conference Center

Pre-registration is highly encouraged. Walk-in registrations may be limited due to facility capacity. Register now at events.anr.msu.edu/listeningseries. Questions? Contact Kathy Walicki at walicki@msu.edu or Marie Garcia at garci434@msu.edu.





MSU Extension Child and Family Development

MSU Extension has a wide range of free online classes for parents and caregivers of children of all ages and early childhood professionals.

Extension Extra's Parenting Hour

These free online parenting workshops will provide guidance for parents of young children as they navigate the challenges, concerns, and joys of parenting. Participants may register for as few or as many workshops as they wish. The workshops are on Tuesday evenings from 8:00 to 9:30PM EST as follows:

Class dates:

- 12/5/2023: Essential Skills for Learning and Life
- 12/12/2023: Talking with Kids about Race
- 12/19/2023: Mindfulness for Children
- 12/26/2023: NO CLASS

Registration: https://msu.zoom.us/webinar/register/WN_APSEiTFUTfOSwoRU7aQ17g

For more information contact Courtney Aldrich at aldric82@msu.edu



Guidance and Discipline: Mistaken Goals of Misbehavior

Michigan State University Extension has partnered with Cooperative Extension in other states to provide more resources and classes for you! This workshop will look at the causes of children's misbehavior and techniques to respond to their mistaken goals.

Class date: December 4th, 2023, 8:00-9:00pm EST

To register go to: <https://go.unl.edu/fhkonehour>

There is an option to watch the "live" or "recorded" version of each session. You will have one week after the recorded session is available to watch the webinar and receive continuing education credits. Questions? Email fhk@unl.edu or call 402-336-2760

Guiding Principles

Are you wondering how to gain greater cooperation from your children? Struggling with chores or routines? Not sure how to handle discipline issues? Join us for this five-week parenting education series for parents with children of all ages will explore developing routines, emotional control, rules and relationships, and being a calm, assertive parent. Certificates of attendance are available.

Class dates/times: 11/20, 11/27, 12/4, 12/11, 12/18 7:30pm-9pm EST

Registration: https://msu.co1.qualtrics.com/jfe/form/SV_6XReroOy9fS0mKa

For more information, contact Courtney Aldrich, aldric82@msu.edu or Carrie Shrier shrier@msu.edu

Kinship Caregiver Classes

Kinship Caregiver classes are targeted to relatives caring for another relative's children.

Essential Skills for Learning and Life will help parents learn about social emotional intelligence, the critical skills children need to learn and how you can incorporate them into everyday interactions with young children and gain resources to support skill building.

Class date: December 13th "Essential Skills for Learning and Life" from 7:00-8:30pm EST

Registration: https://msu.zoom.us/webinar/register/WN_msxyZuH0QeS9MsKaD_y7Tg

For more information, contact Courtney Aldrich, aldric82@msu.edu



MSU Extension Child and Family Development

MSU Extension has a wide range of free online classes for parents and caregivers of children of all ages and early childhood professionals.

Early Childhood Professional Development Classes

These free online classes provide professional development training hours for early childhood professionals. Credit in the MiRegistry system is available.

Title: Mindfulness for Young Children

Class Date: 12/21/2023

Class Time: 7:00PM to 8:30PM

Registration: https://msu.zoom.us/webinar/register/WN_jLVWzzM6Qlimr7VBOCrrPA

For more information contact Vivian Washington at washi138@msu.edu

Title: Positive Discipline

Class Date: 12/22/2023

Class Time: 7:00PM to 8:30PM

Registration: https://msu.zoom.us/webinar/register/WN_jLVWzzM6Qlimr7VBOCrrPA

For more information contact Vivian Washington at washi138@msu.edu



In-Person Workshop: Including All of Us

Including All of Us is an intensive training to provide an opportunity for child care professionals to learn about issues of diversity, equity and inclusion in early childhood. Including All of Us includes group content, where early childhood professionals can explore their own beliefs, worldviews and understanding of issues surrounding diversity. Participants learn about ways they can incorporate anti-bias education into their work with young children and create environments of equity for all children. Including All of Us provides an opportunity for teachers to practice self-reflection and develop an awareness that will have a positive impact on their teaching, child care skills, and family interactions.

This in-person, free program is six hours in length and can be taught in one six-hour session or two, three-hour sessions. The program is approved in the MiRegistry system and completion certificates are available.

To schedule a workshop at your location, contact Vivian Washington at washi138@msu.edu

Online Self-Paced Classes

These free online classes can be completed on your own at your own pace.

Positive Discipline

Helping young children learn self-control is important to their ability to be successful citizens now and in the future. Positive Discipline workshops help adults learn how their role in creating appropriate environments and experiences can strengthen that development. This class has a “parent and caregiver” track and a “professional” track. Certificates of attendance are available for all who take the class and professional development training hours are available for early childhood professionals. Credit in the MiRegistry system is available.

Registration: <https://www.canr.msu.edu/courses/positive-discipline-online-course>

Infant Safety

MSU Extension has partnered with the Livingston County Child Abuse Prevention Council to create a self-directed online infant safety course called “Sleeping, Crying, Driving.” This three part course contains videos and interactive content on infant safe sleep, how to handle extended infant crying and guidelines for transporting your child safely. A certificate of completion is available for those who need proof of attendance.

Registration: https://www.canr.msu.edu/early_childhood_development/infant-safety/